



ERF Workshop

Technology Transfer and Industrial Relations in Research Infrastructures

Trieste June 6-7, 2013

Who are we?

- PSI: → belongs to the ETH – Domain
– **ETH** = Swiss Federal Institute of Technology
→ is the largest **Research Centre** for natural and engineering sciences in Switzerland



We create tomorrow's knowledge today

What are we doing?

Energy and Environment



Health and Food



Material and Accelerator Technology

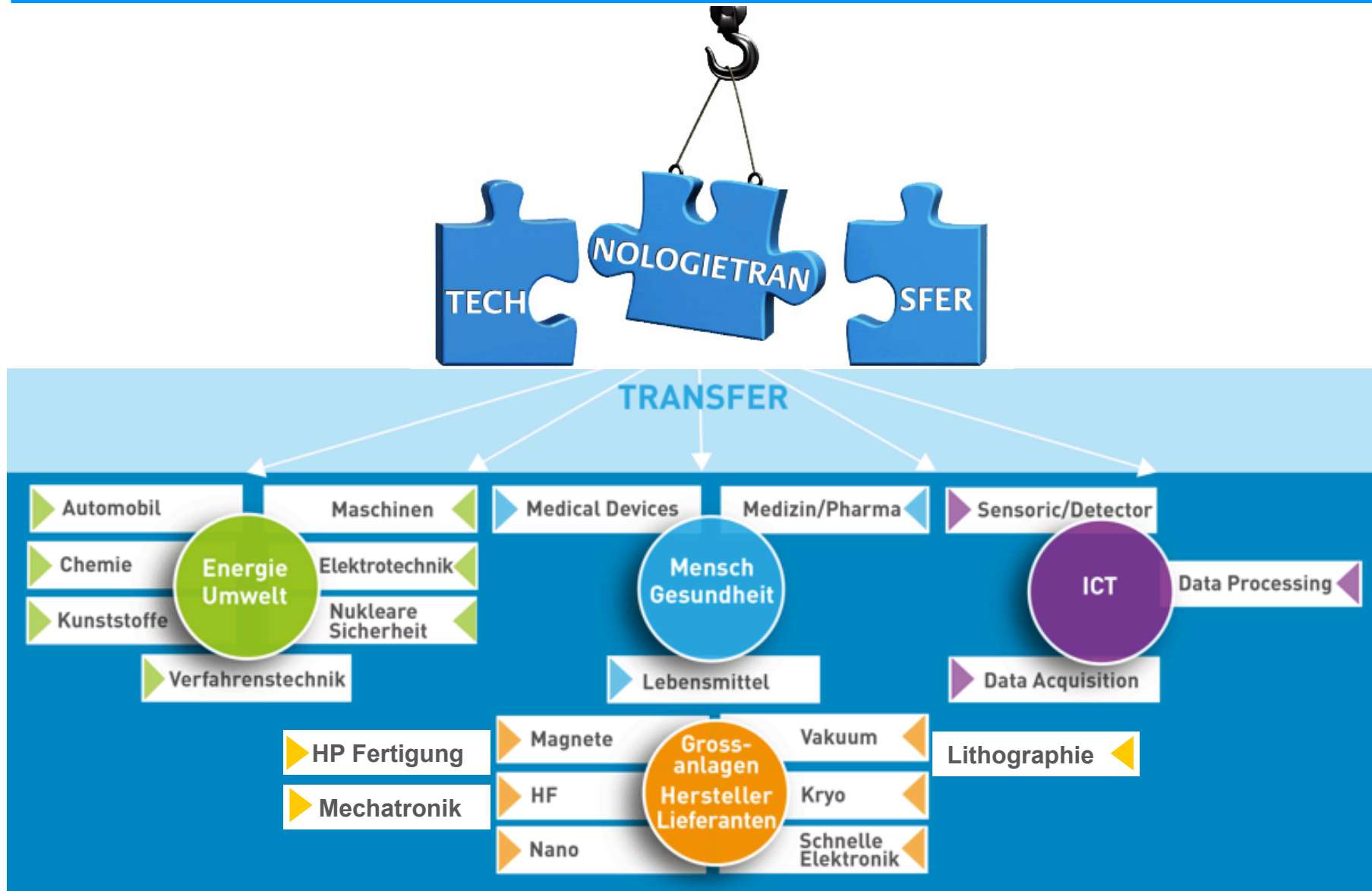


ICT



Four main fields of activity

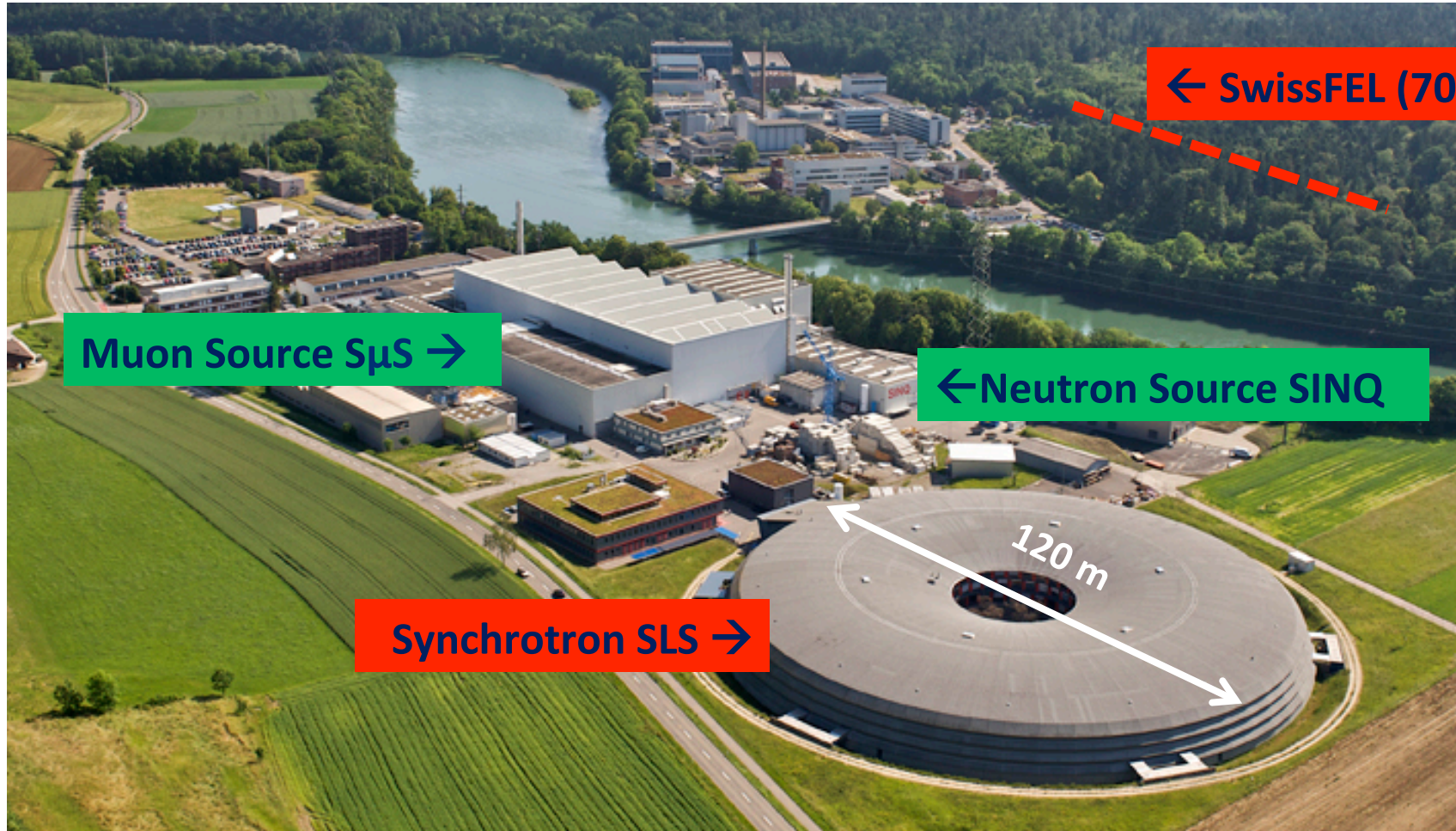
Interactions with Industries



Beyond the boundaries of possible

How we do it?

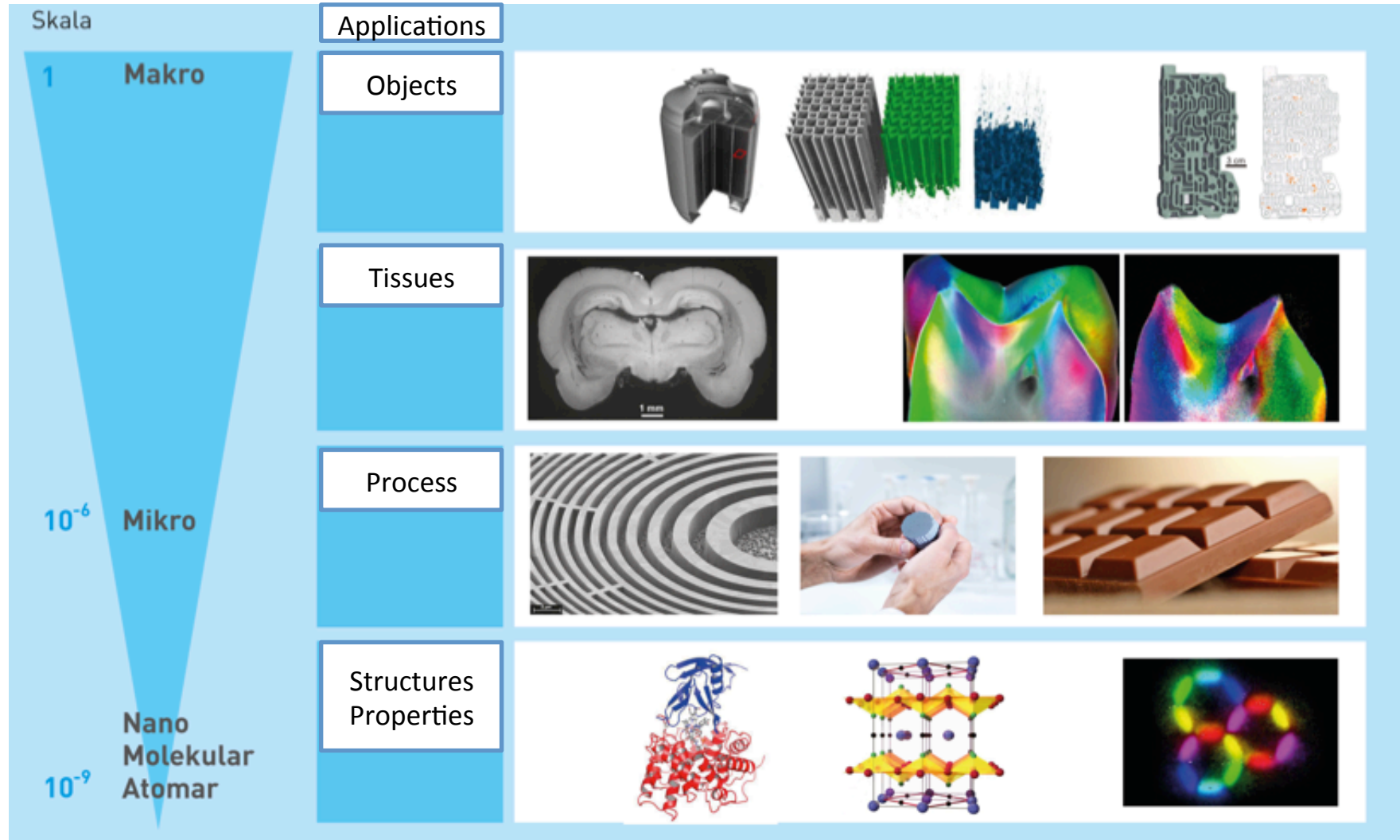
Material research by means of large R&D facilities



All major national large R&D facilities in one place

Those facilities are just toys for scientists?

No... but for understanding materials towards industrial applications



Seeing is believing

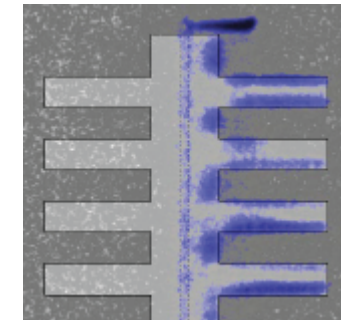
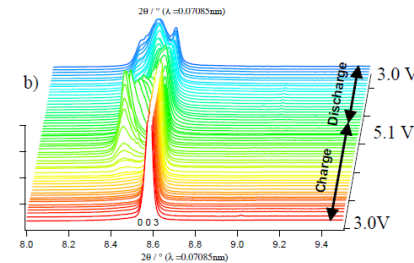
Energy

- Timcal G&C, BASF, Varta, J OEM

Electrodes damage in charge/discharge cycles

- VW, Belenos (Swatch), Michelin, Postauto AG

Fuel cell optimisation (water distribution in bipolar plates)

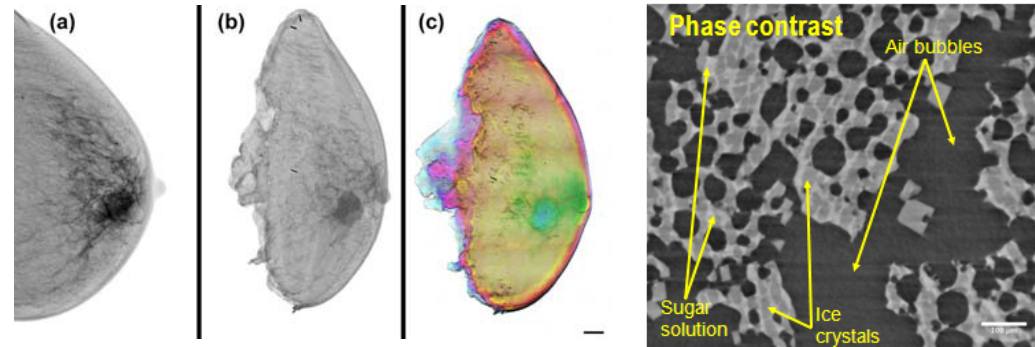


Health and Food

- Improved Diagnostic with DPC

- International Food Holding

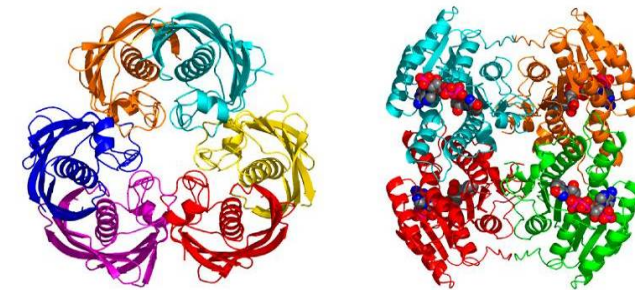
Cristallisation processes in food



Pharma

- Roche, Novartis, Actelion

determination of protein structures



Metallurgy

- ABB, Alstom

- Stress and fatigue in materials

Swiss entrepreneurs testimonials

- Portal: www.psi.ch/industry

“ Right from the beginning, the cooperation with PSI seemed to be very promising and valuable. In the course of our collaboration, this presumption was confirmed in all respects. The adaptation and the implementation of the technology would not have come to market readiness and product launch so fast without the qualified and expert support of PSI ”

Dr. Marco Santis, CEKAtec, Wattwil



New developments – always improving

Thank you for your attention



www.psi.ch/industry/technology-transfer